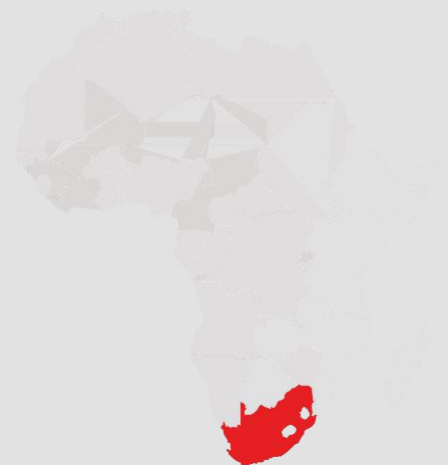


SOUTH AFRICA | 8 DAY WAIT A LITTLE
BIG 5 RIDE

8 Day Wait A Little Big 5 Ride



Wait a Little Horse Safaris is based on privately managed game reserves close to The Kruger National Park. With the backdrop of the Drakensburg Mountains, Wait a Little's safaris ride over an area of 30,000 hectares of prime African bushveld.



SOUTH AFRICA | 8 DAY WAIT A LITTLE BIG 5 RIDE

Wait a Little Horse Safaris is based on privately managed game reserves close to The Kruger National Park. With the backdrop of the Drakensburg Mountains, Wait a Little's safaris ride over an area of 30,000 hectares of prime African bushveld. The reserves have various ecosystems ranging from open plains and woodlands to hills, kopjes and gullies. The many rivers are the lifeline of the region and support an impressive population of trees, plants and wildlife such as hippo, crocodile, bushbuck, kudu, nyala, waterbuck and many different bird species.

The riding is in groups of seven, with long canters, small jumps, and a good chance of seeing the Big 5 (lion, leopard, buffalo, elephant and rhino). Generally guests ride for up to three hours in the morning before lunch and a siesta and then head back out again later in the afternoon. However, there may also be full day rides with picnics. With 35 well-schooled horses, ranging from 14.3hh to 17hh and a mixture of South African Boerperds, thoroughbreds and crosses, warmbloods and Arabs, there are horses to suit all requirements.

- Riding near the Kruger National Park
- 30,000 hectare private wildlife reserve
- Experienced riders only (good riding skills and fitness are essential)
- Experience the excitement of wildlife viewing from horse back
- Go in search of the Big 5
- Day and night wildlife drives
- Eight days/ seven nights on safari in a combination of luxurious tents, chalets and fly camping
- Private guide throughout
- Maximum group size of seven guests on set departure trips to ensure a highly personal experience



SOUTH AFRICA | 8 DAY WAIT A LITTLE BIG 5 RIDE

Please note that the riding safari itinerary is a sample of what to expect. Day to day activities, camps and locations may change in order to enhance your safari and riding experience.

Days 1 to 3

On arrival at Wait A Little you will be welcomed by your guides, who will run through the safety procedures followed on the riding safaris. After a light lunch or afternoon tea you go out on horses for an orientation ride which takes you through the area surrounding the camp. This is your chance to become accustomed to the horses and riding style. You might even see the first giraffe or zebra. Sundowners, looking out towards the Drakensberg Mountains, are a perfect prelude to a delicious dinner.

Your stay at Wait A Little Main Camp is on a full board basis to include all meals, local drinks, laundry and all riding and wildlife viewing activities. Accommodation for the first three nights is in modern, thatched canvas tents with ensuite bathrooms, equipped with an outside shower and a lookout bath, mounted on platforms above the Makhutswe River at the Wait A Little Main Camp.

On day two you are woken with tea or coffee in the morning. After a light continental breakfast you will mount your horse and set off on safari. The weather will dictate your day, but usually you ride for three to four hours in the morning and two to three hours in the afternoon. Lunch is served following your morning ride after which you will have time for a well-earned siesta or a dip in the swimming pool. During your lunchtime there is the option to have a relaxing massage by the in-house therapist. Afternoon tea and coffee are served before you set out on your afternoon ride, which ends at a beautiful sundowner where you can enjoy the colourful sunset.

On the third day you have a chance to rest from the saddle and head on a wildlife drive in the afternoon, stopping off at a beautiful location to enjoy a sundowner.



SOUTH AFRICA | 8 DAY WAIT A LITTLE BIG 5 RIDE

Day 4

Another beautiful morning ride the morning followed by Ana's famous brunch. This afternoon you will pack a small bag ready for your overnight stay at Beacon Rock fly camp. Your luggage will be brought by vehicle, whilst you set off on horseback, riding south between the twin rock formations of Lion and Leopard Hill. The gently undulating tracks in this area lend themselves to long easy canters. Giraffe, zebras or wildebeest may pick up the pace and run by your side, elegantly manoeuvring through the veldt.

Beacon Rock fly camp is situated at a giant rock formation from where you can overlook the whole Lowveld escarpment. A quick scramble up to the top rewards you with a spectacular panorama over the whole reserve and the perfect vantage point to witness the sun set over the Drakensberg escarpment.

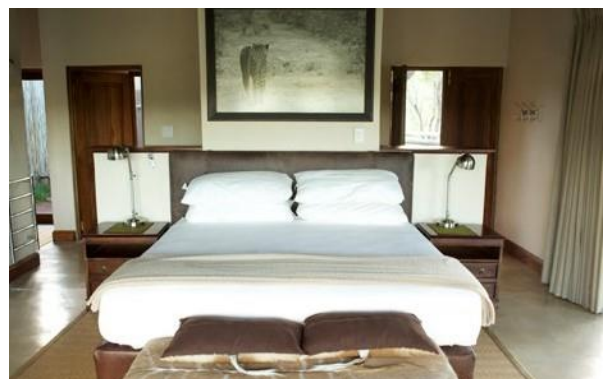
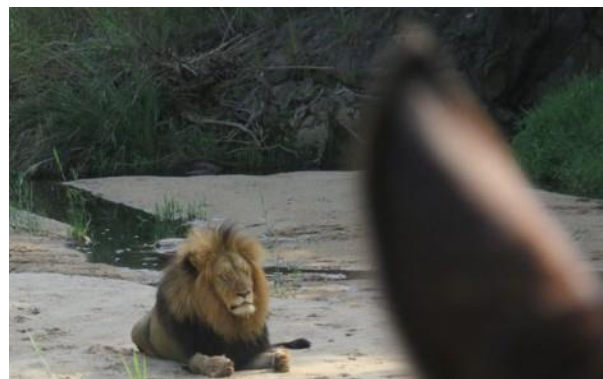
You will stay at Beacon Rock fly camp for one night on a full board basis to include all meals, local drinks, laundry and all horse riding and wildlife viewing activities. Meals are served around the campfire under the stars and surrounded by your horses.

Day 5 and 6

After breakfast this morning you will set off on your longest ride. You enter the Greater Makalali Game Reserve, dominated by huge open plains, where you might find yourself cantering next to giraffes, zebras or wildebeest. Spectacular views, over big distances show you the way to XiDulu, your camp for the next two nights. You stay at XiDulu Camp on a full board basis to include all meals, local drinks, laundry, and all horse riding and wildlife viewing activities.

XiDulu Camp, built on the edge of a dam with a resident pod of hippos, comprises five comfortably furnished chalets, including a honeymoon suite with a lovely private sala. The rooms have indoor and outdoor showers, a bath, air conditioning and a secluded verandah which provides a perfect spot to relax between game viewing activities. The main area houses two dining spaces, an outside eating area, a bar, a barbecue and an infinity pool with a built in jacuzzi.

After an afternoon siesta you set out on a game drive in an open top Land Rover in search of big cats. Following a relaxing sundowner, you continue the drive into the night where you might be lucky enough to see some of the nocturnal wildlife in the area including bushbabies, owls, and possibly leopard.



SOUTH AFRICA | 8 DAY WAIT A LITTLE BIG 5 RIDE

You return to camp for dinner, served either at the edge of a big dam or in the dining area.

The following day you go exploring, cutting through the veldt at a canter, twisting and turning around the trees, "bushwhacking" as Philip calls it, and your sure-footed horse carries you nimbly through the undergrowth, changing direction as you guide his course. Here and there a tree, felled by an elephant, provides an irresistible jump.

Refreshed after a well-deserved siesta you head out on an afternoon wildlife drive.

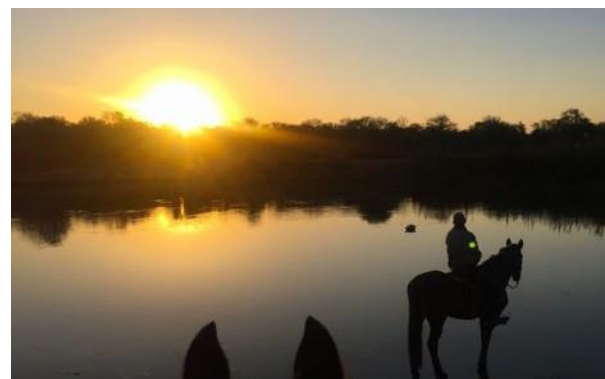
Day 7

After a light breakfast this morning you set out on the ride back to Wait A Little Main Camp. On your way you might be fortunate enough to see elephant, lion, rhino, and giraffe and this will determine your path. You will arrive back at camp in time for another of Ana's fabulous lunches.

This afternoon you have time for your final sundowner before returning to camp for a delicious dinner. Your overnight stay at Wait A Little Main Camp is on a full board basis to include all meals, local drinks, laundry and all horse riding and wildlife viewing activities.

Day 8

This morning you have time for a final, short, sporty ride before breakfast and then you are transferred back to the airport in time for your onward travel arrangements.



SOUTH AFRICA | 8 DAY WAIT A LITTLE BIG 5 RIDE



WAIT A LITTLE MAIN CAMP

Wait A Little has got four rooms in total: three tented camps on platforms overlooking the Makuthswe River and one Rondavel in the garden overlooking the horse paddocks.

Tent 1 and 2: these tents have got a king size double bed and optional single bed. The bathroom is thatched overlooking the Makuthswe River with an outside shower, bath, toilet and washbasin.

Tent 3: This tent is bigger than the others. It has got two double beds, a sitting area and a huge platform overlooking the River. This room is for single travellers sharing or honeymoon couples. The bathroom is also thatched with an outside shower, bath and basin. The private toilet also has a wash basin.

Rondavel: This room is available for single travellers not wanting to share or pay single supplement. It has got a queen size bed and its own bathroom Rondavel with a shower, toilet and washbasin.

All rooms are equipped with mosquito netting, insect repellent, adapters (two point to SA and English adapters) and hairdryers. All rooms have electricity with hot and cold water.

BEACON ROCK FLY CAMP

The highest point on the reserve is an old hunting camp, where you have your sleep out. Spectacular views and unbelievable sunsets are experienced from the top of a rock formation. This is the true African Experience; sleeping under the stars and having a real Braai (the Afrikaans word for barbecue). You sleep under the stars on stretcher beds in sleeping bags.

XIDULU CAMP

A private camp on the Greater Makalali Game Reserve, located by a big dam with a resident pod of hippos. XiDulu has 5 rooms, a main area, an infinity pool and viewing platforms. There are three types of rooms which are: Mangwa (meaning Zebra), the biggest room, with a super king size bed, dressing room, bathroom, inside and outside shower, bath overlooking the dam, a fireplace, air-conditioning and a private sala. Three rooms (Nhongo, Nyala and Hongonyi) offer a king size bed (one of which can be made up as a twin), inside and outside shower, bath, viewing deck, air-conditioning and a dressing area. Mahla is a room close to the main areas, with an amazing view over the dam. It has a queen size bed, inside and outside shower, viewing deck, air-conditioning and a dressing area.

SOUTH AFRICA | 8 DAY WAIT A LITTLE
BIG 5 RIDE



2023 TRAVEL DATES

18 & 25 Mar
08, 15 & 22 Apr
13 & 20 May
11 Jun
08 & 29 Jul
05, 19 & 26 Aug
02, 16 & 30 Sep
07 Oct
25 Nov
09 & 16 Dec

Please enquire if your specific dates are not listed, as it is sometimes possible to run additional trips.

2023 SCHEDULED DEPARTURE COSTS (GBP £)

Per person sharing a tent is £3,570
Single room supplement is 50%

Price excludes flights or transfers

THE ITINERARY INCLUDES

Accommodation and meals as stated
Drinks as stated
Laundry as stated
Activities as stated
National Park and concession fees

THE ITINERARY EXCLUDES

International flights
Regional flights
Internal flights
Visas
Travel insurance
Tips and gratuities
Other personal spending

**SOUTH AFRICA | 8 DAY WAIT A LITTLE
BIG 5 RIDE**



Horse type

SA Boerperd, thoroughbreds and crosses,
warmbloods, Arab

.....

Saddles used

Leon Liversage endurance saddles, English

.....

Maximum number

7 riders

.....

Hours in the saddle per day

Between 4 and 7

.....

Standard of riding required

Experienced

.....

Children accepted

Minimum age 12 years and must be competent

.....

When to go

All year

.....

Non-riders welcome

No

.....

Activities other than riding

Game drives and walks

.....